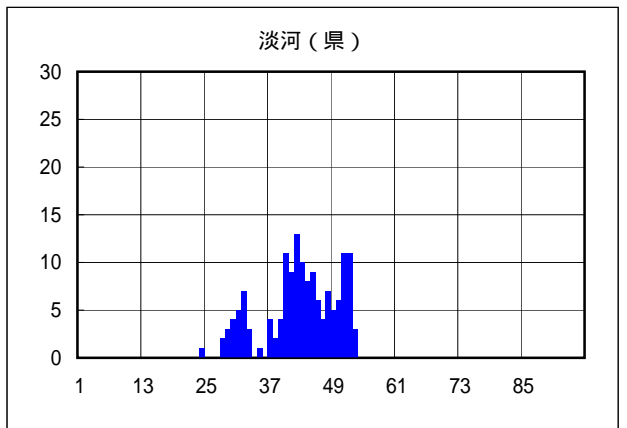
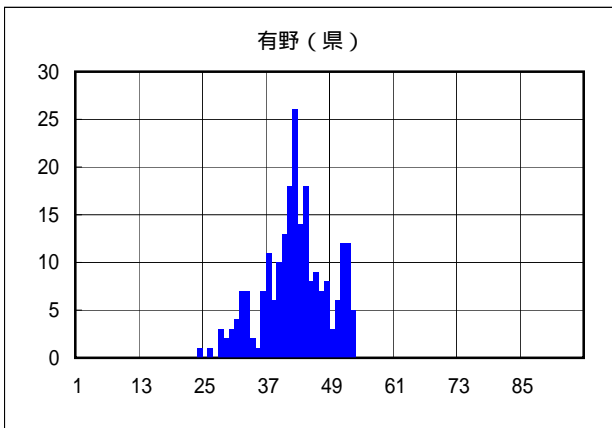
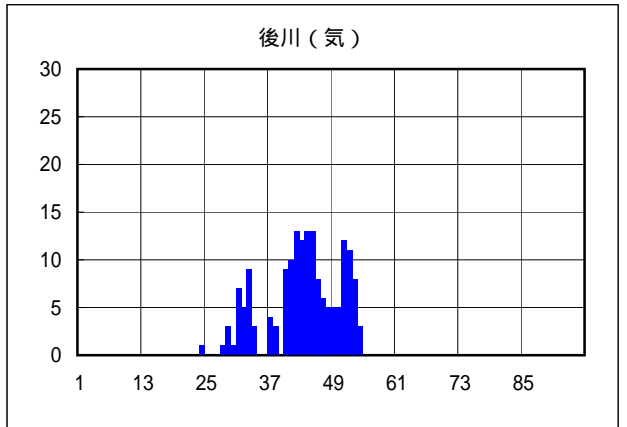
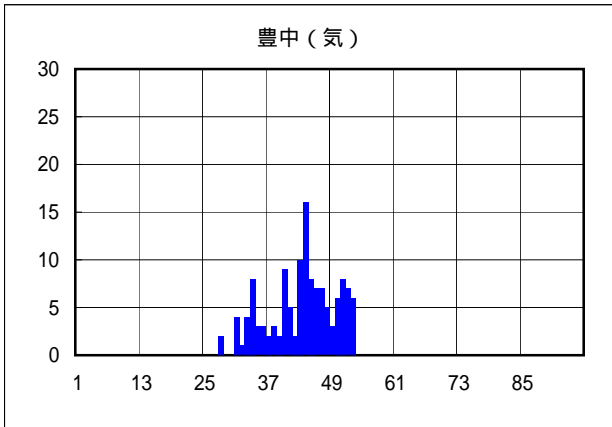
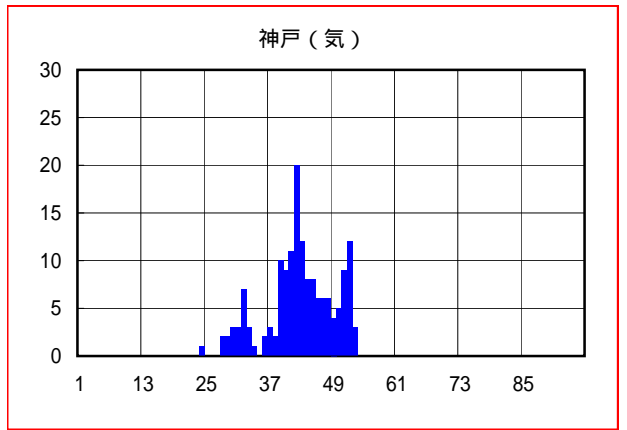
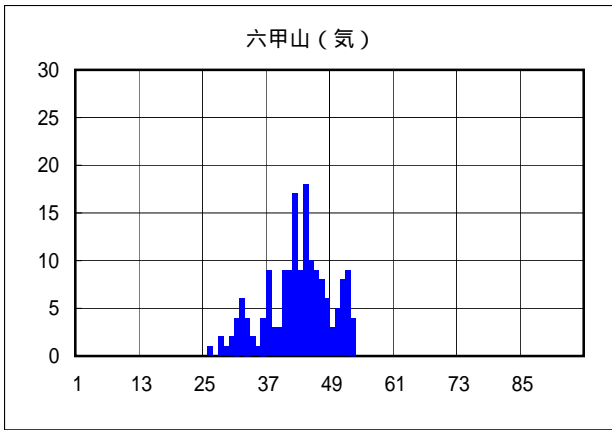
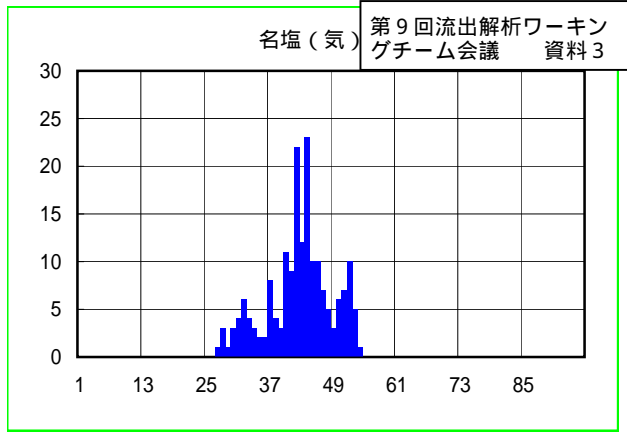
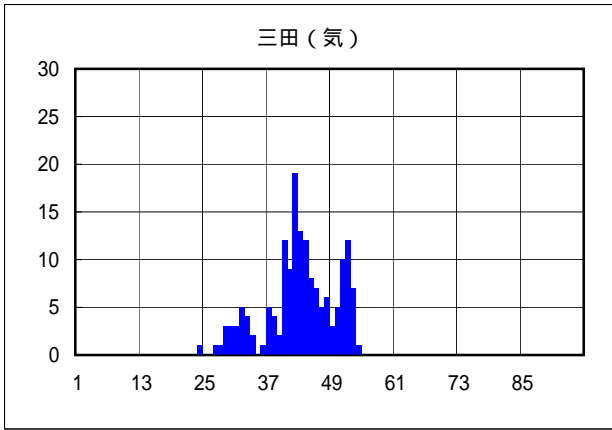


第19回流域委員会 資料2-4の補足資料(伊藤委員意見対応)

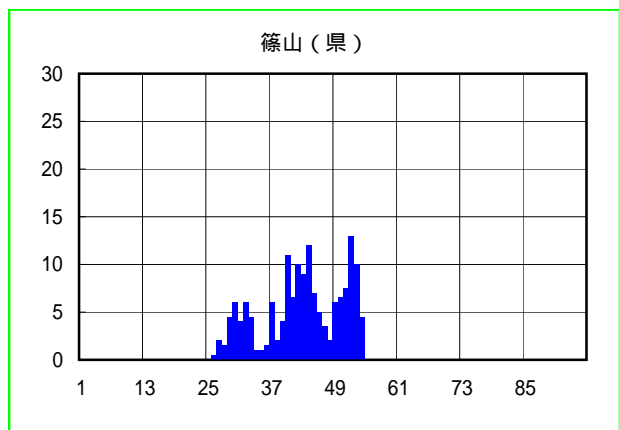
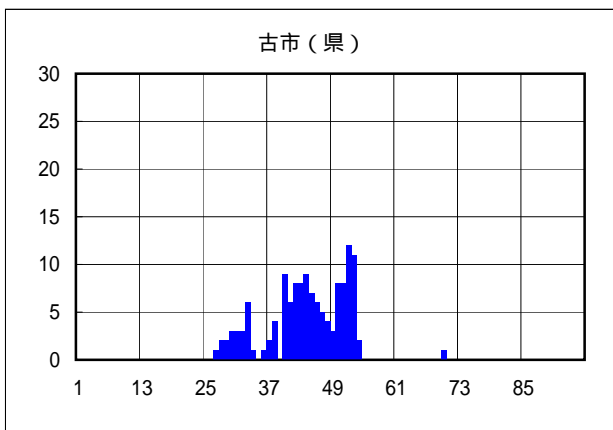
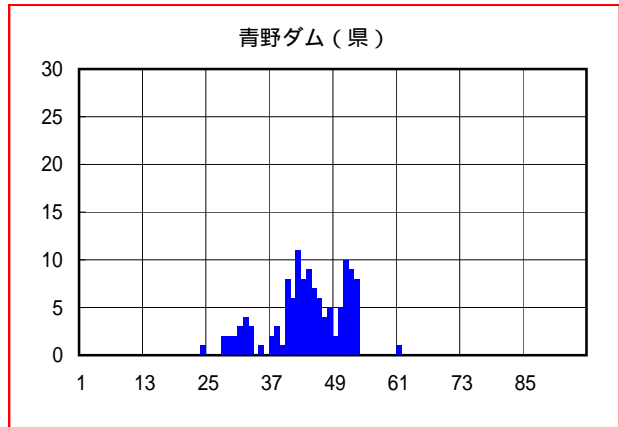
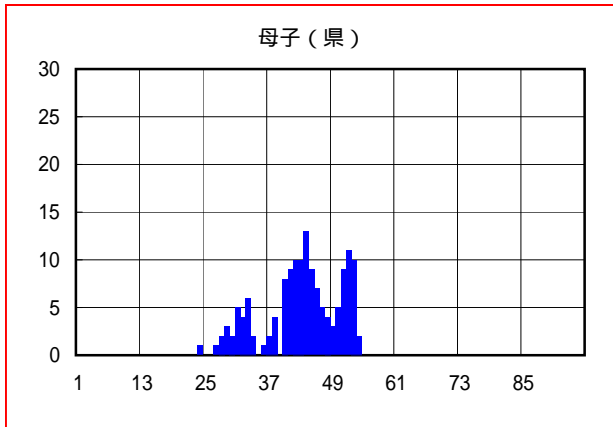
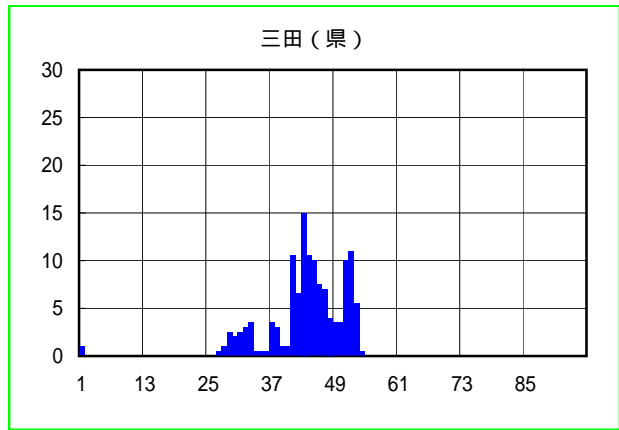
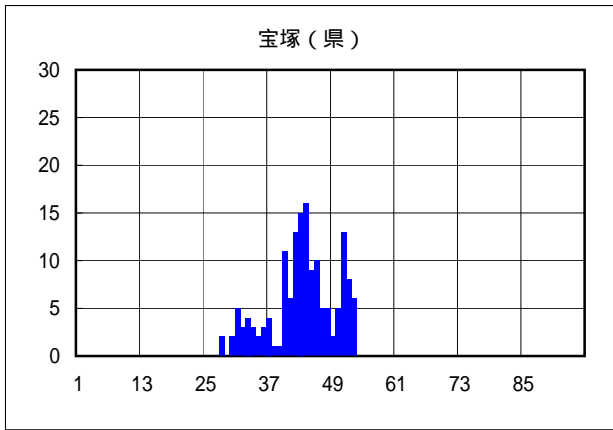
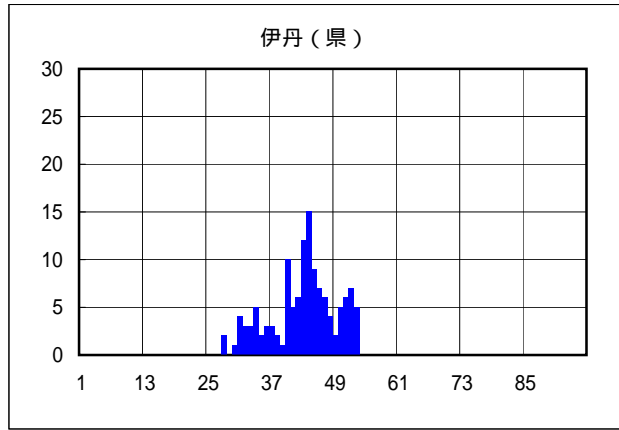
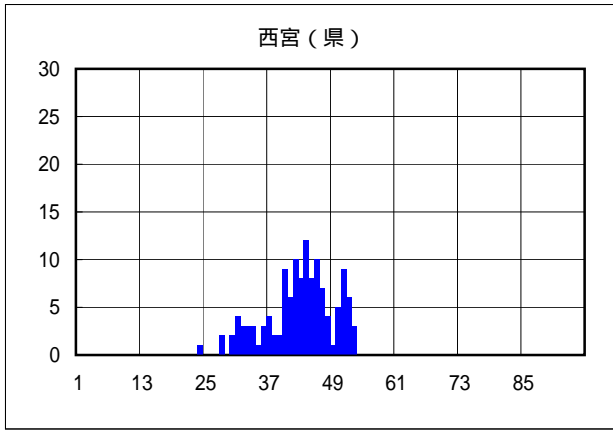


H7.5.10洪水実績降雨波形(1)

1/9

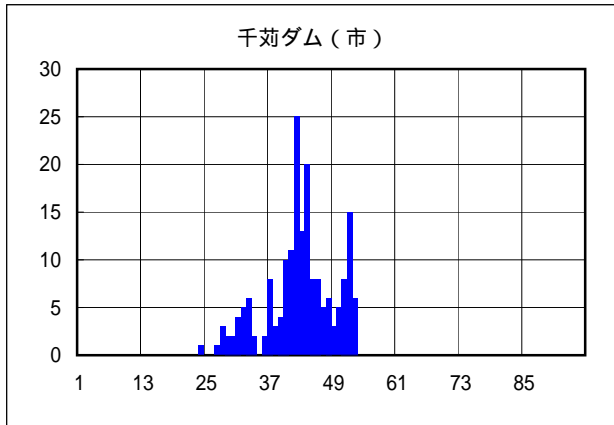
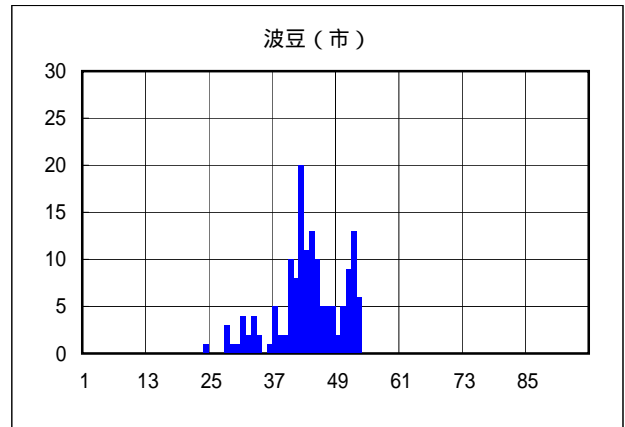
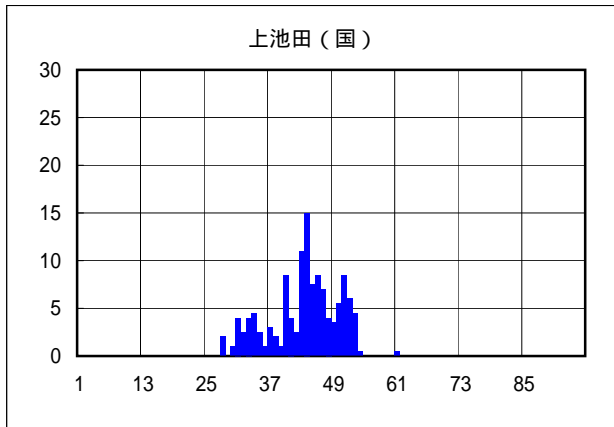
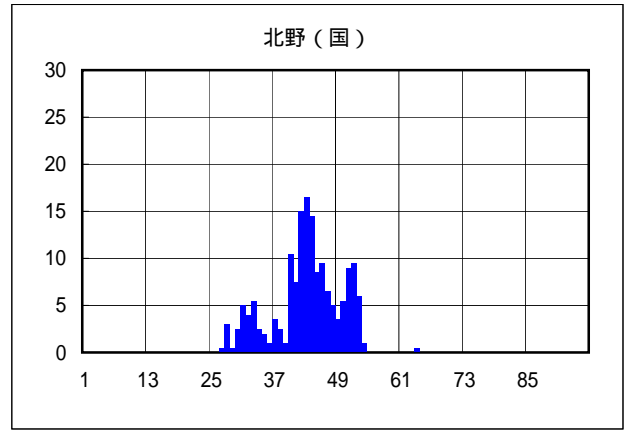
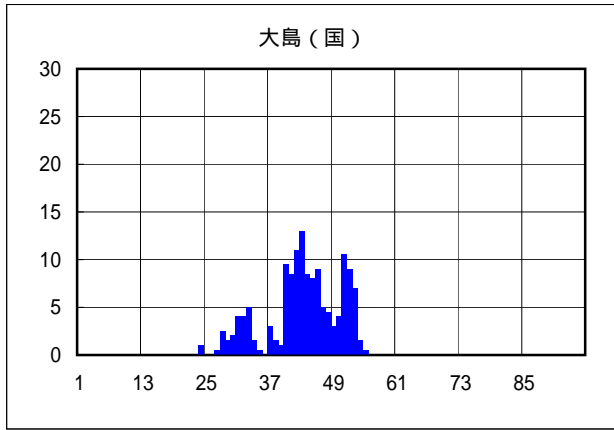
赤色で囲ったものはS31～35の3観測所、これに緑色を加えたものがS36～41の6観測所である。

第19回流域委員会 資料2-4の補足資料(伊藤委員意見対応)



H7.5.10洪水実績降雨波形(2)

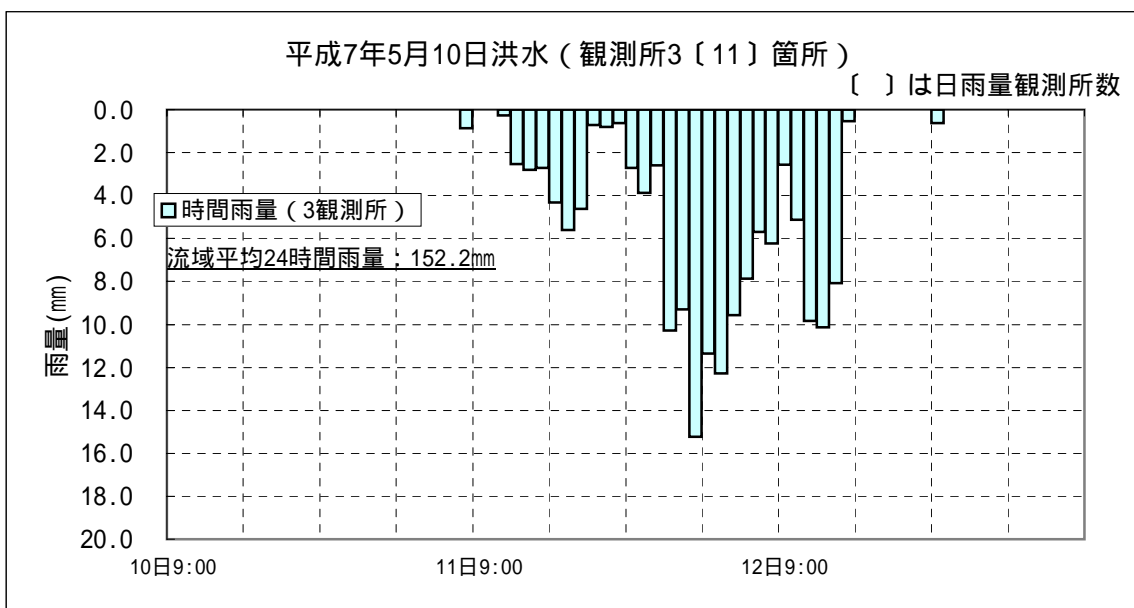
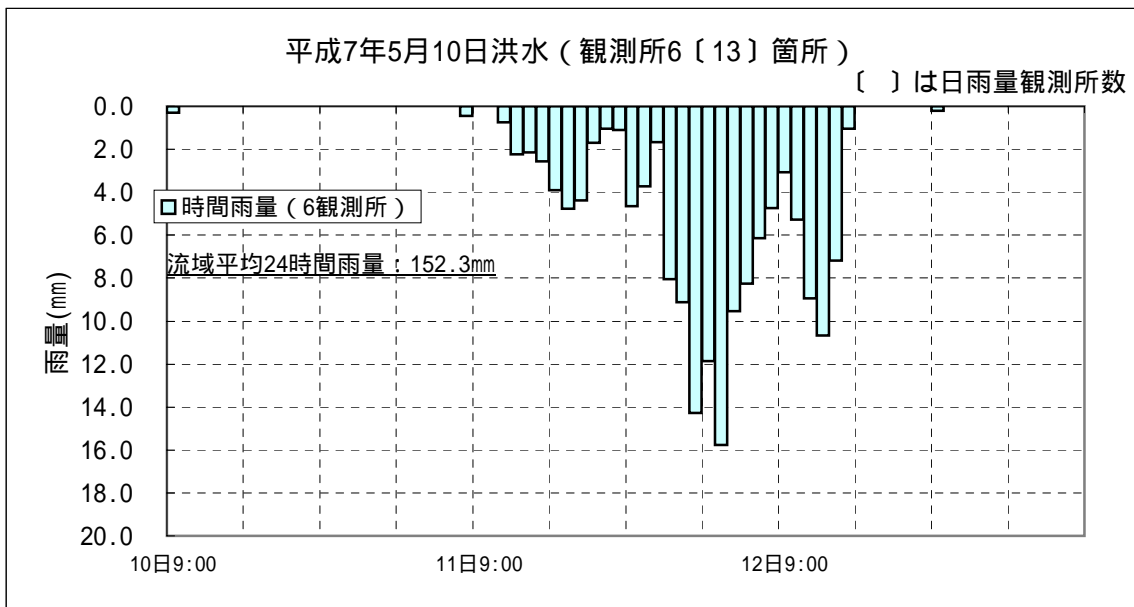
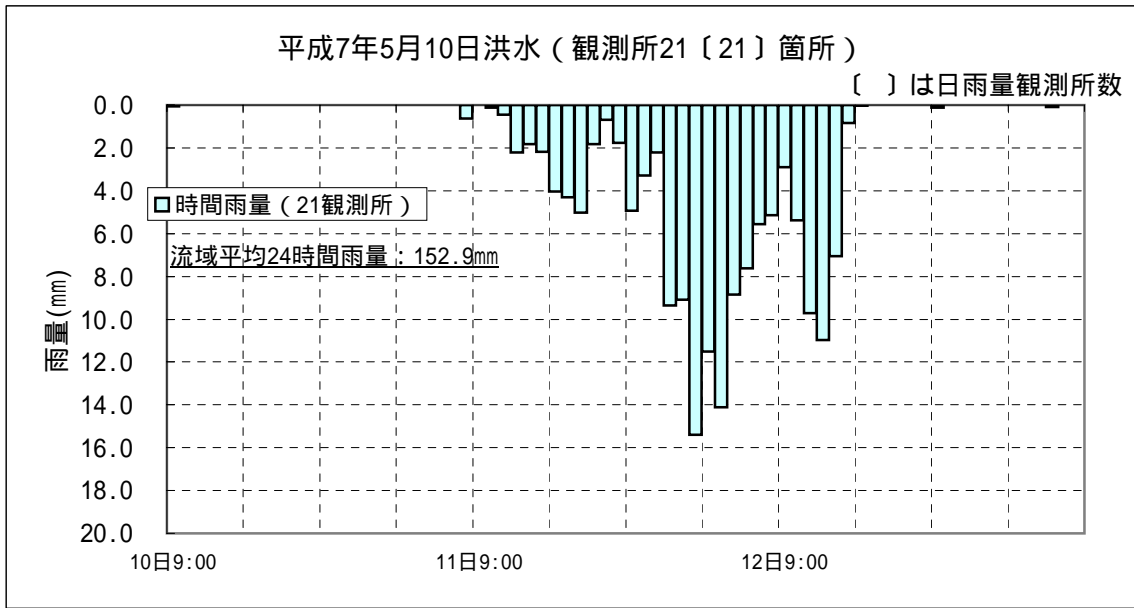
第19回流域委員会 資料2-4の補足資料(伊藤委員意見対応)



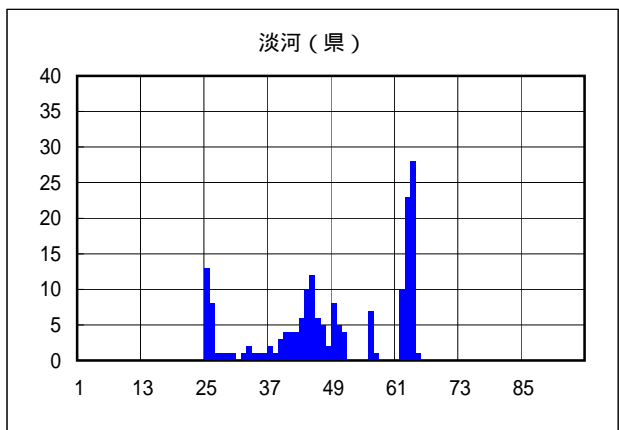
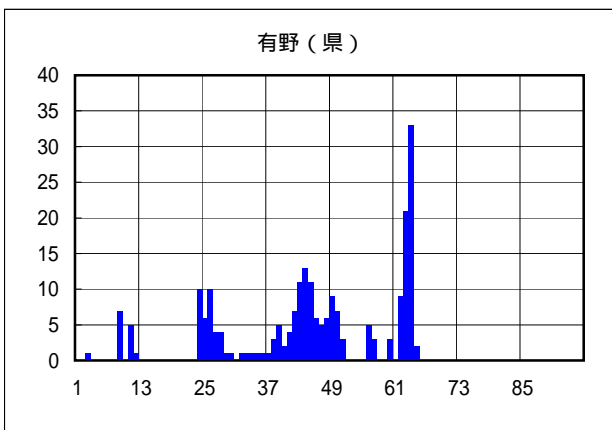
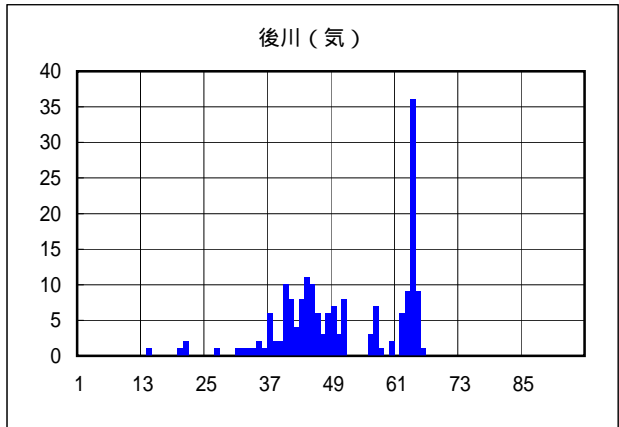
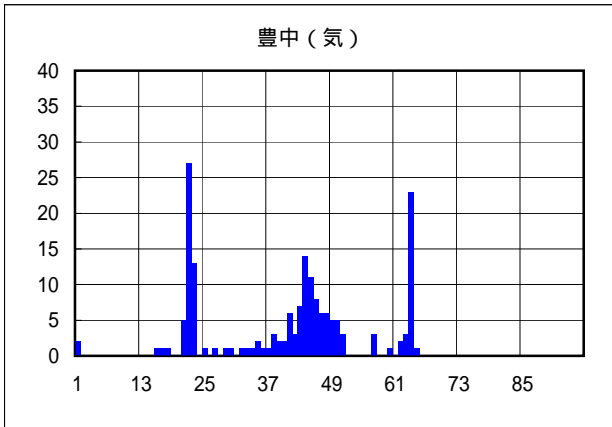
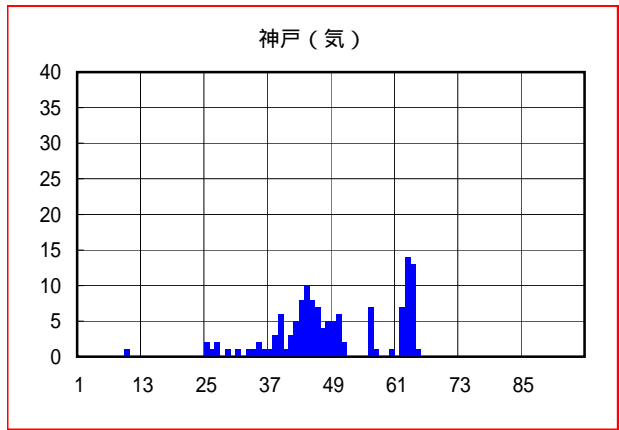
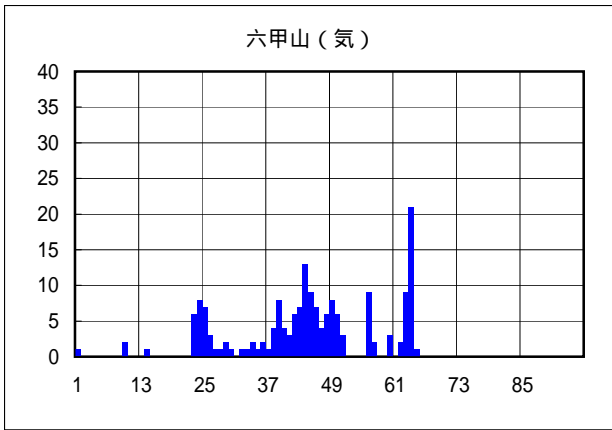
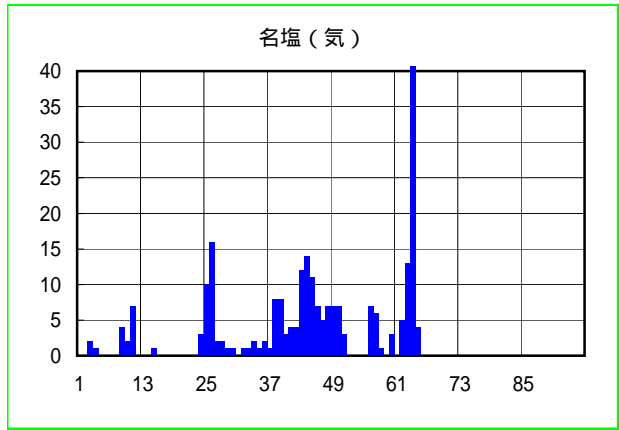
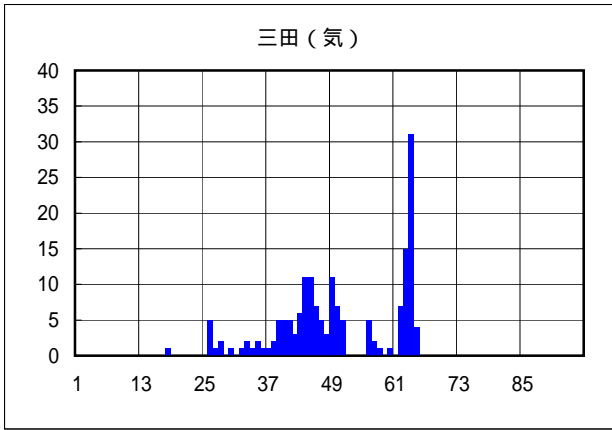
H7.5.10洪水実績降雨波形(3)

3/9

赤色で囲ったものはS31～35の3観測所、これに緑色を加えたものがS36～41の6観測所である。

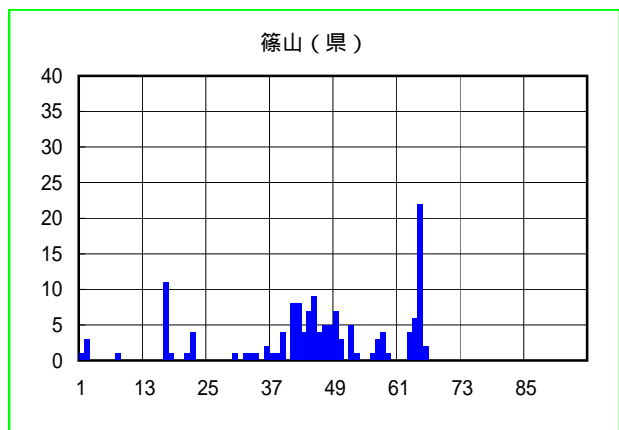
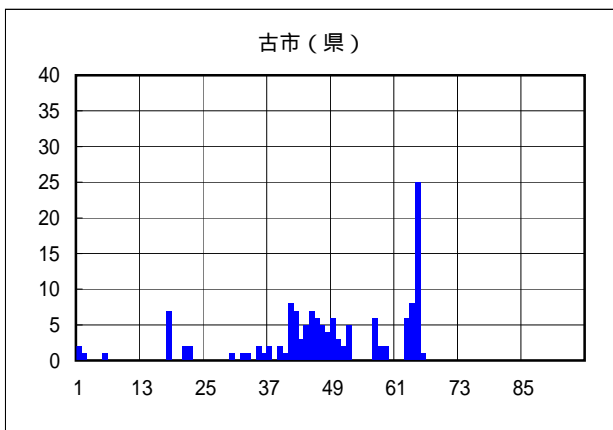
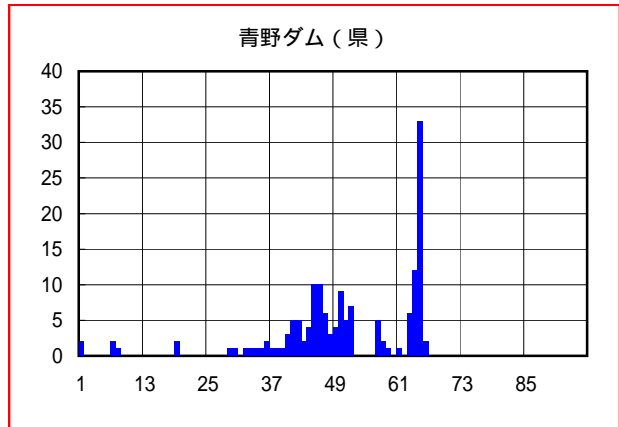
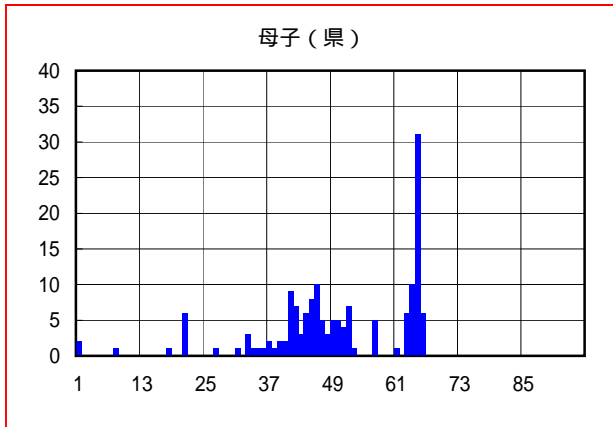
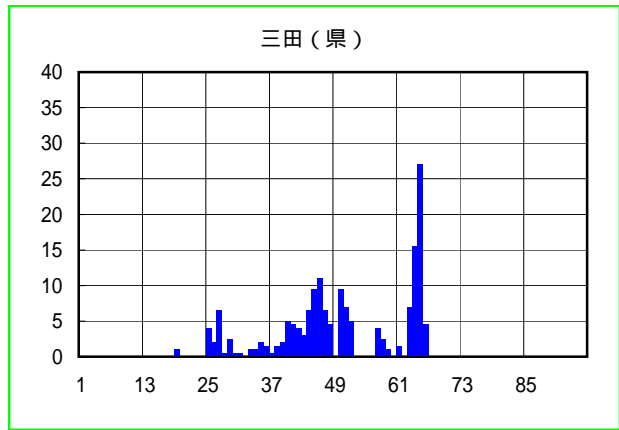
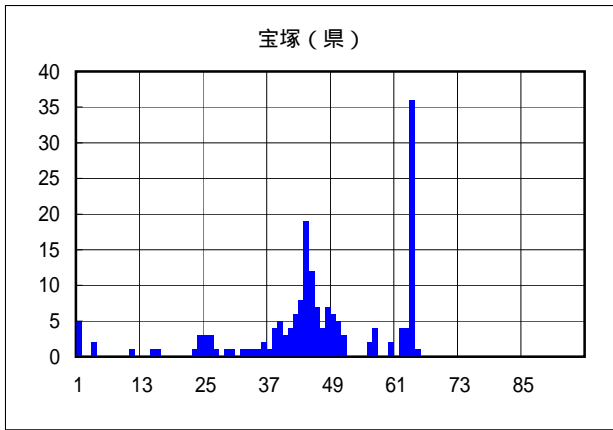
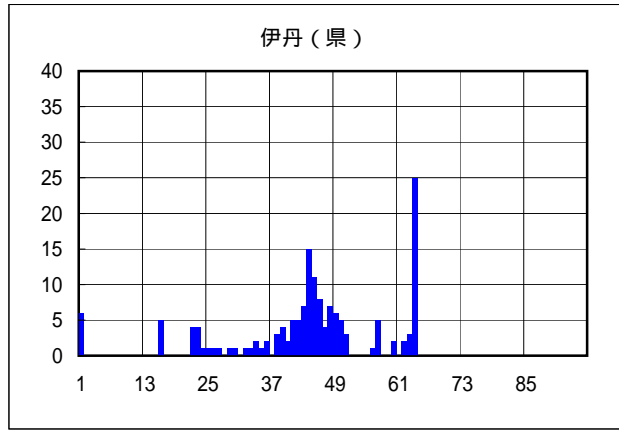
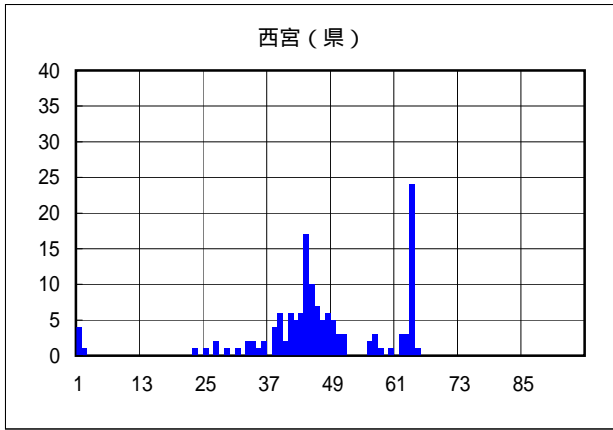


第19回流域委員会 資料2-4の補足資料(伊藤委員意見対応)



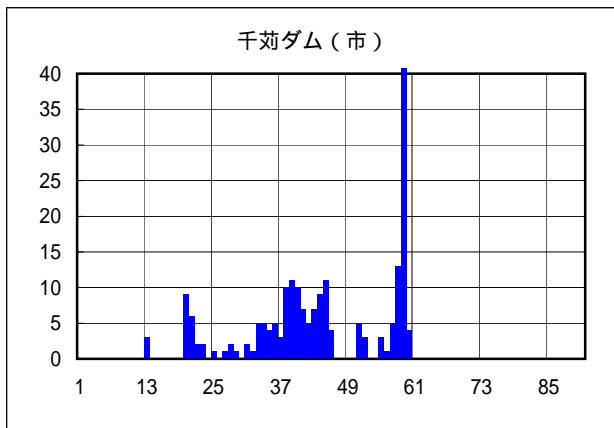
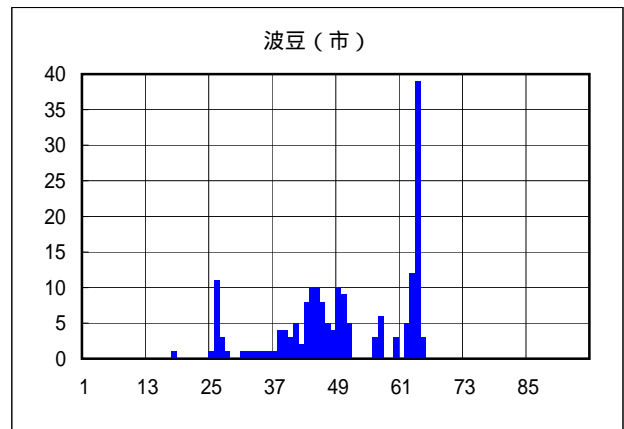
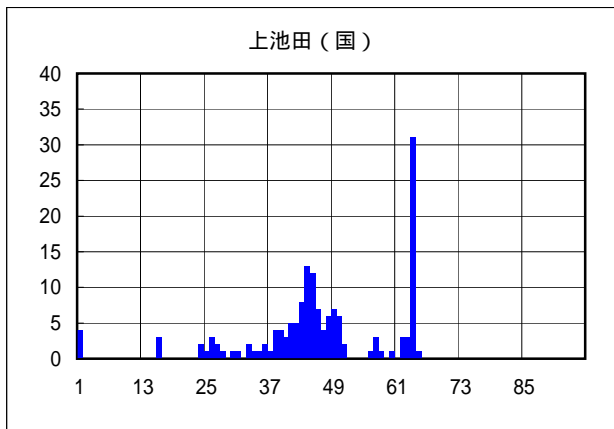
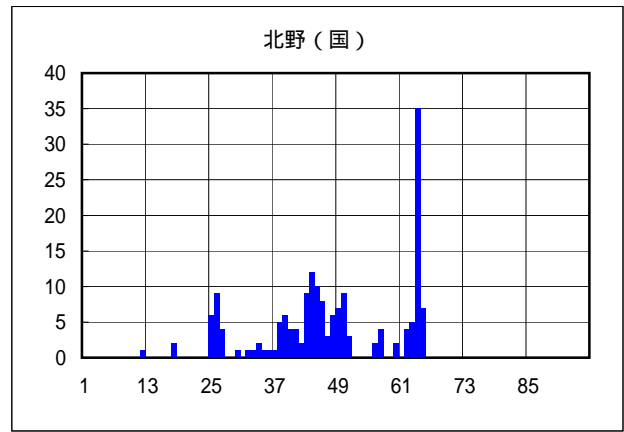
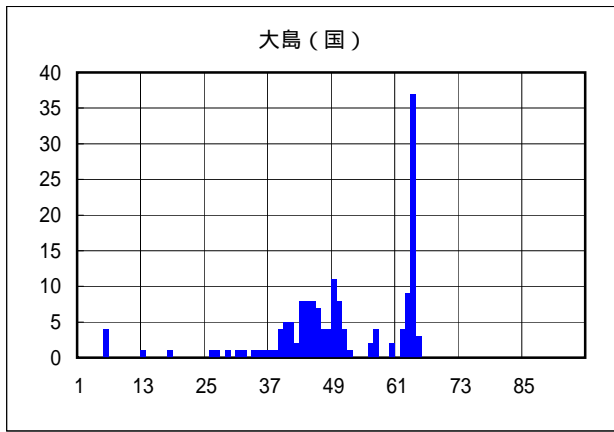
H10.10.13洪水実績降雨波形(1)

第19回流域委員会 資料2-4の補足資料(伊藤委員意見対応)



H10.10.13洪水実績降雨波形(2)

第19回流域委員会 資料2-4の補足資料(伊藤委員意見対応)



H10.10.13洪水実績降雨波形(3)

7/9

赤色で囲ったものはS31～35の3観測所、これに緑色を加えたものがS36～41の6観測所である。

